

PACKAGE CONTENTS

1	CM-54i
1	Blue/Green/Red Aura PCB
2	#6 x 3/8" Screws

Section 1

General Description

Camden Aura™, Model CM-54i provide the Industry's 1st "Changing State" illuminated switch enclosures.

They offer field selectable blue/green/red illumination, activated directly by the switch or remotely by a relay* such as our CX-33 or EMF-2, a time-clock or access control system.

User selectable features include a 3 Amp Form 'C' relay, and piezo speaker for audible annunciation, as well as control over the idle and active LED colours.

Another exclusive is the ability to plug in a TX-9 RF transmitter, thereby requiring only 2 conductors be run for power (& no batteries required)!!

The box is made of impact and flame resistant black ABS, and compatible with any Camden CM-41, CM-45, or CM-46 series switch.

The illumination is provided by an array of super-bright and energy efficient LED's, which can be powered by 12 or 24 volts AC/DC.

Section 2

Setup

Switch SW1 contains a bank of 3 dipswitches.

Dipswitch # 3 turns the speaker on or off. Dipswitch # 2 toggles operation of the relay, and # 1 allows you to choose whether the colour will be changed locally via the push switch, or remotely.

***Note: The CX-22 Washroom relay may be used with the Aura™, however an isolating relay must be wired in parallel with the lock, and the relay's dry contact output wired into the CM-54i .**

Setup

Switch	Position	Description
SW1	1	REMOTE / LOCAL On to enable LED colour change from idle to Active with press of the push button.
	2	RELAY On to enable operation of the relay with activation of the push button
	3	SPEAKER On to enable operation of the speaker with activation of the push button

Color selection is made with Switches SW2 and SW3. SW2 determines the Active colour and SW3 determines the Idle color.

Setting the Active Color (SW2)

Switch	Position	Description
SW2	1	ON = Green LED when Active
	2	ON = Red LED when Active
	3	ON = Blue LED when Active

Setting the Active Color (SW3)

Switch	Position	Description
SW3	1	ON = Green LED when IDLE
	2	ON = Red LED when IDLE
	3	ON = Blue LED when IDLE

Note: If all DIP switches are in the OFF position, there will be no color illuminated. This allows for no Idle color or no Active color.

Once all DIP switches are set, proceed to Section 3 - Installation

Section 3

Installation

NOTE: If you will be including the optional Aura™ signage, follow that product's installation instructions before installing Aura™.

Aura™ CM-54i Surface Mount Illuminated Enclosure Installation Instructions

1. Determine the wire access location and drill hole of sufficient size, or use center knock-out plug. Drill the four required mounting holes. (11/64" min.) There are four indents provided on 3" centers for your convenience. (see Diagram 1)
2. Pull wiring through access hole, and mount the box to wall using 4 screws.
3. Remove circuit board from package and locate into the box. Pull the wire through the hole in centre of circuit board, and then secure with the two small self-tapping screws (provided).
- 4.a Wire as per diagram 2 (typical installation). Route the switch wiring through opaque diffuser panel, and install diffuser panel into box. It should fit snugly.
- 4.b If using a TX-9 transmitter to send the signal to an RX-91 or RX-92 Receiver, attach the transmitter and wire it before installing circuit board into the enclosure and fitting diffuser. See Diagram 3.
5. Screw in two #6-32 Allen-head screws (provided with switch) into the threaded center inserts, then attach wires to switch and install switch over screws. Using the Allen key (provided), locate the screws and tighten (by hand only).
6. Connect power and test for proper operation

Section 4

Technical Data

Model	CM-54i
Dimensions	6 1/2" H x 6 1/2" W x 2" D (165 mm x 165 mm x 51 mm)
Construction	Flame-resistant black ABS (Insert – translucent ABS)
Finish	Attractive pebble finish
Mounting	4 x #12 wood screws with anchors
Input Voltage	12 or 24V AC/DC
Output Voltage	3 Volts DC for TX-9 (only)
Current draw	150 mA (max)
Sounder	3200 ± 300 Hz @ 85 dB
Lumina Red:	14.8 lumens, 1600 mW;
Green:	3.8 lumens, 330 mW,
Relay Contact	1 x Form C
Contact Rating	3A @ 30 VDC

Section 5

Warranty

Camden Door Controls guarantees the Aura™ (CM-54i series) to be free from manufacturing defects for 3 years from date of sale.

If, during the first 3 years, the Aura™ fails to perform correctly, it may be returned to our factory where it will be repaired or replaced (at our discretion) without charge. Except as stated herein, Camden extends no warranties expressed or implied regarding function, performance or service.



Push Buttons



Keypads



Strikes



Magnetic Locks



Key Switches



Relays & Timers



Access Control



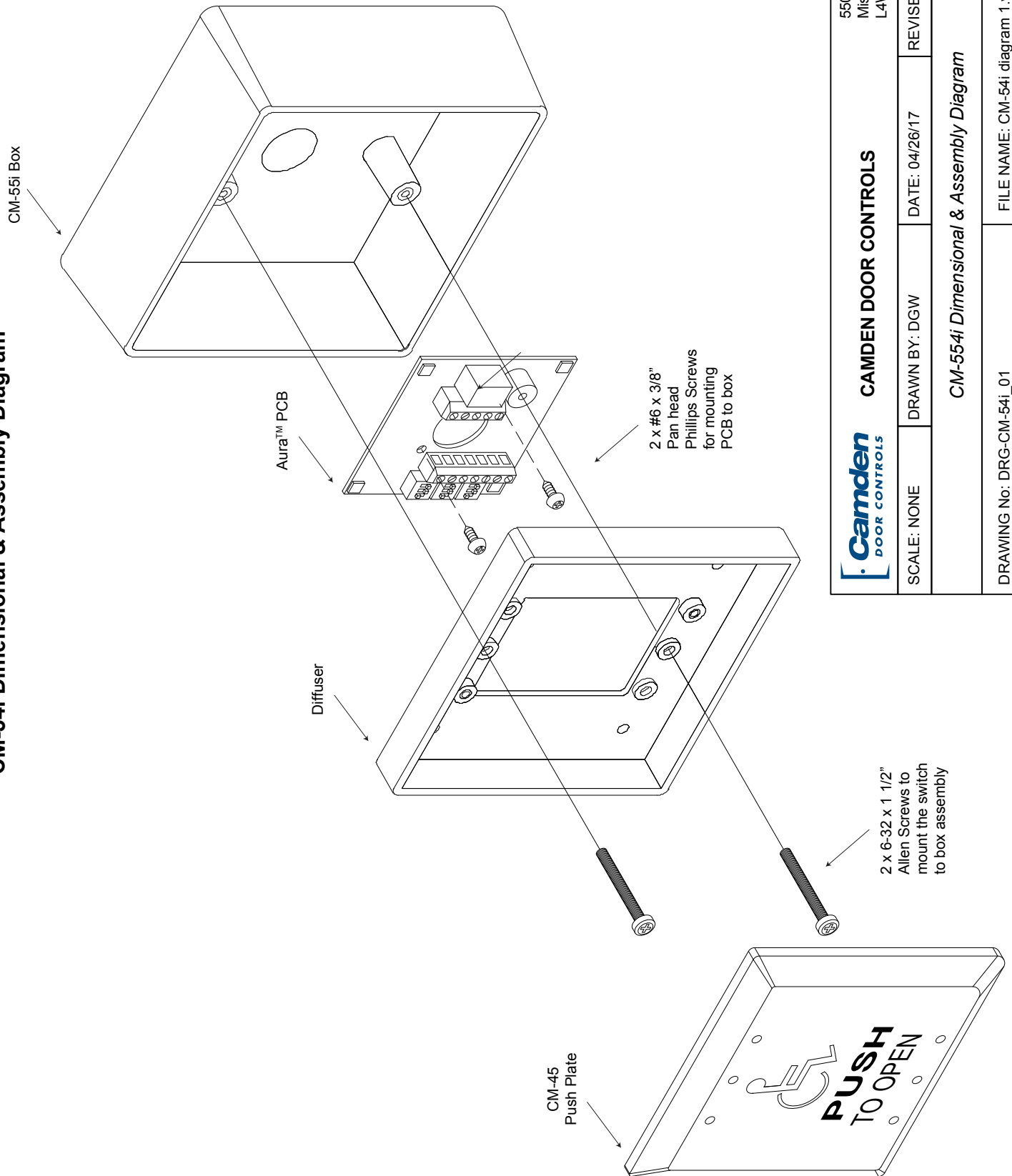
DISCOVER THE BEST IN DOOR ACTIVATING AND LOCKING PRODUCTS!

www.camdencontrols.com
Toll Free: 1.877.226.3369

File: CM-54i Manual. indd Rev1
Revised: 05/05/17
Part No:40-82B208



CM-54i Dimensional & Assembly Diagram



CAMDEN DOOR CONTROLS

5502 Timberlea Blvd.
Mississauga, Ontario
L4W 2T7

SCALE: NONE

DRAWN BY: DGW

DATE: 04/26/17

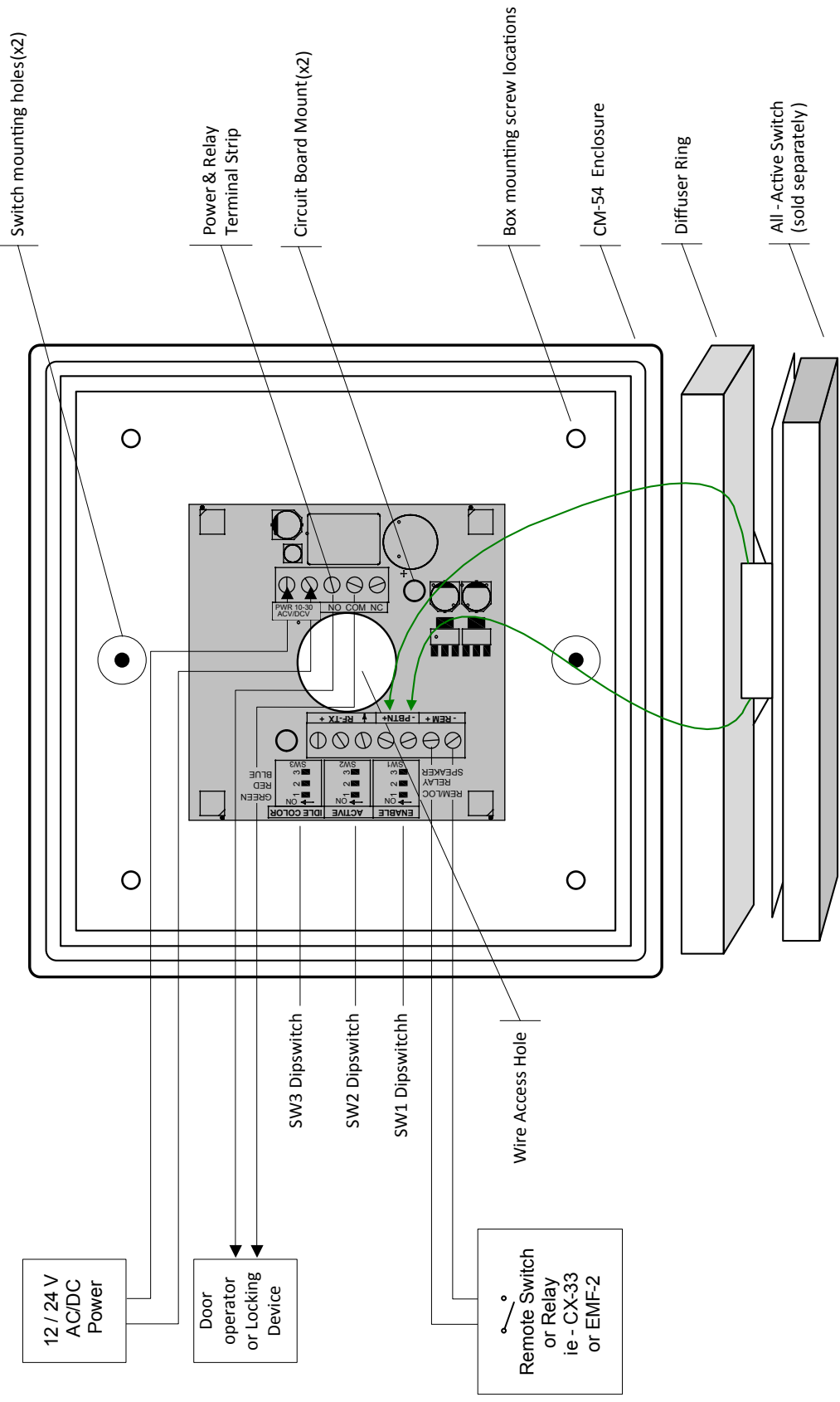
REVISED:


CM-554i Dimensional & Assembly Diagram

DRAWING No: DRG-CM-54i_01

FILE NAME: CM-54i diagram 1.vsd

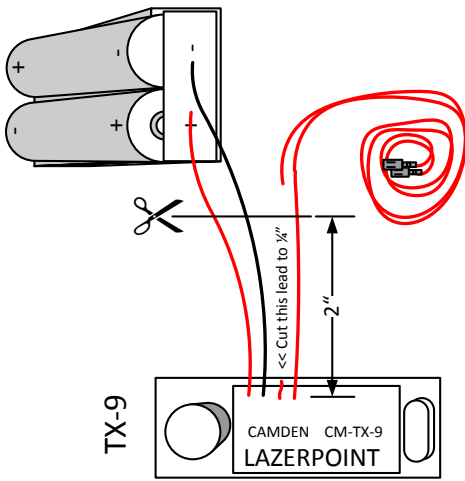
CM-54i Wiring Diagram (Typical)



 Camden Door Controls 5502 Timberlea Blvd. Mississauga, Ontario L4W 2T7			
SCALE: NONE	DRAWN BY: DGW	DATE: 04/26/17	REVISED:
CM-54i Wiring Diagram (Typical)			
DRAWING No: DRG-CM-54i_02		FILENAME: CM_54i Diagram 2.vsd	

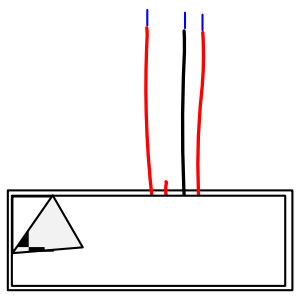
- NOTES:**
1. Power terminals are not polarity sensitive
 2. Typical installation shown, where remote device changes LED colour. If it is desired to have switch activation change LED colour, then set REMOTE/LOCAL dip on SW1 to LOCAL, and do not wire to the REMOTE terminals.

CM-54i & TX-9



STEP 1

Cut the middle red lead to 1/4" as it is not used. Cut both battery leads, and the remaining switch lead to approximately 2" long. Strip the insulation back on the 3 long ends to approximately 1/4".



STEP 2

Turn over, and remove release paper from double sided tape. Line up and carefully install TX 9 on back surface of mounting box

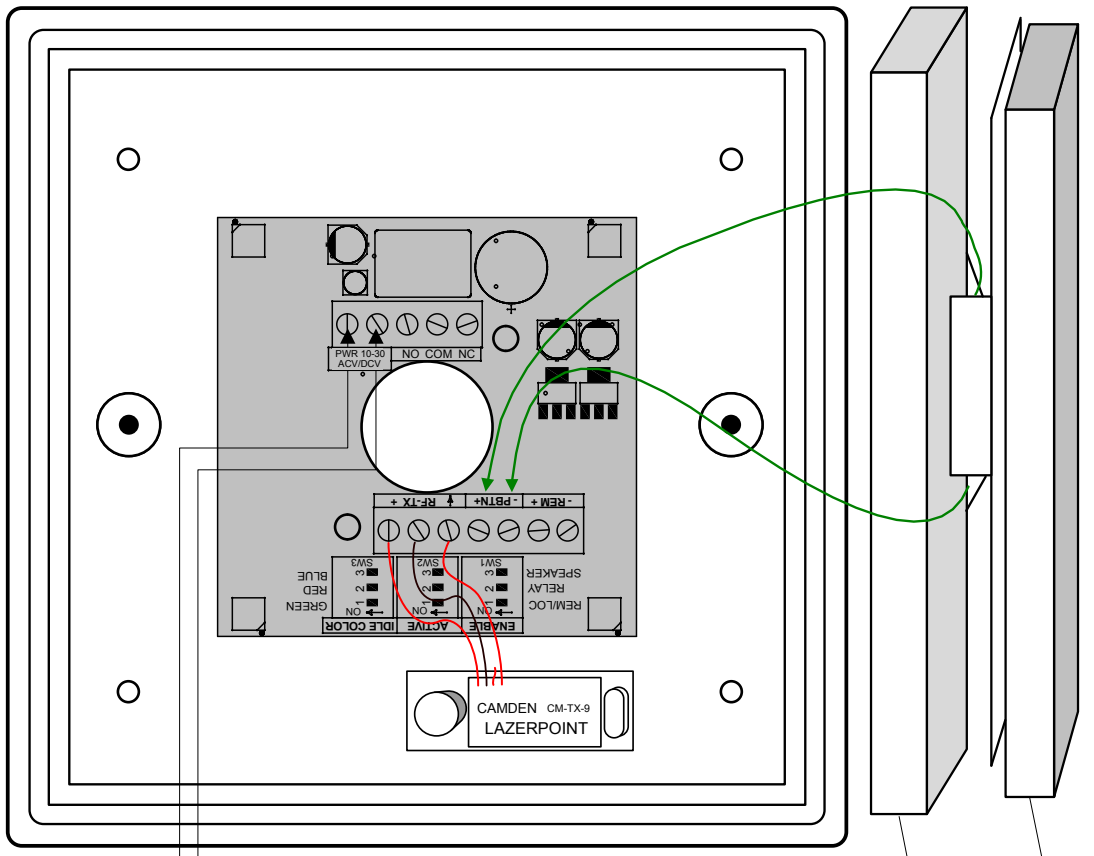


STEP 3

Connect the 3 wires from the TX-9 to the circuit board exactly as shown. The middle red wire that was cut short is not used.

STEP 4

Install circuit board in box, & connect the 2 power wires as shown. Set dipswitches for desired operation. Install diffuser, connect push switch wires to terminal strip, then install switch. Test for proper operation.



Camden Door Controls

5502 Timberlea Blvd
Mississauga Ontario
L4W 2T7

SCALE: NONE

DRAWN BY: DGW

DATE: 04/26/17

REVISED:

Wiring Diagram for CM-54i & TX-9

DRAWING No: DRG-CM-54i_03

FILENAME: CM_54i Diagram 3.vsd

- NOTES:**
1. 12/24 Power terminals are not polarity sensitive.
 2. This installation is intended for 2-wire retrofit applications.