



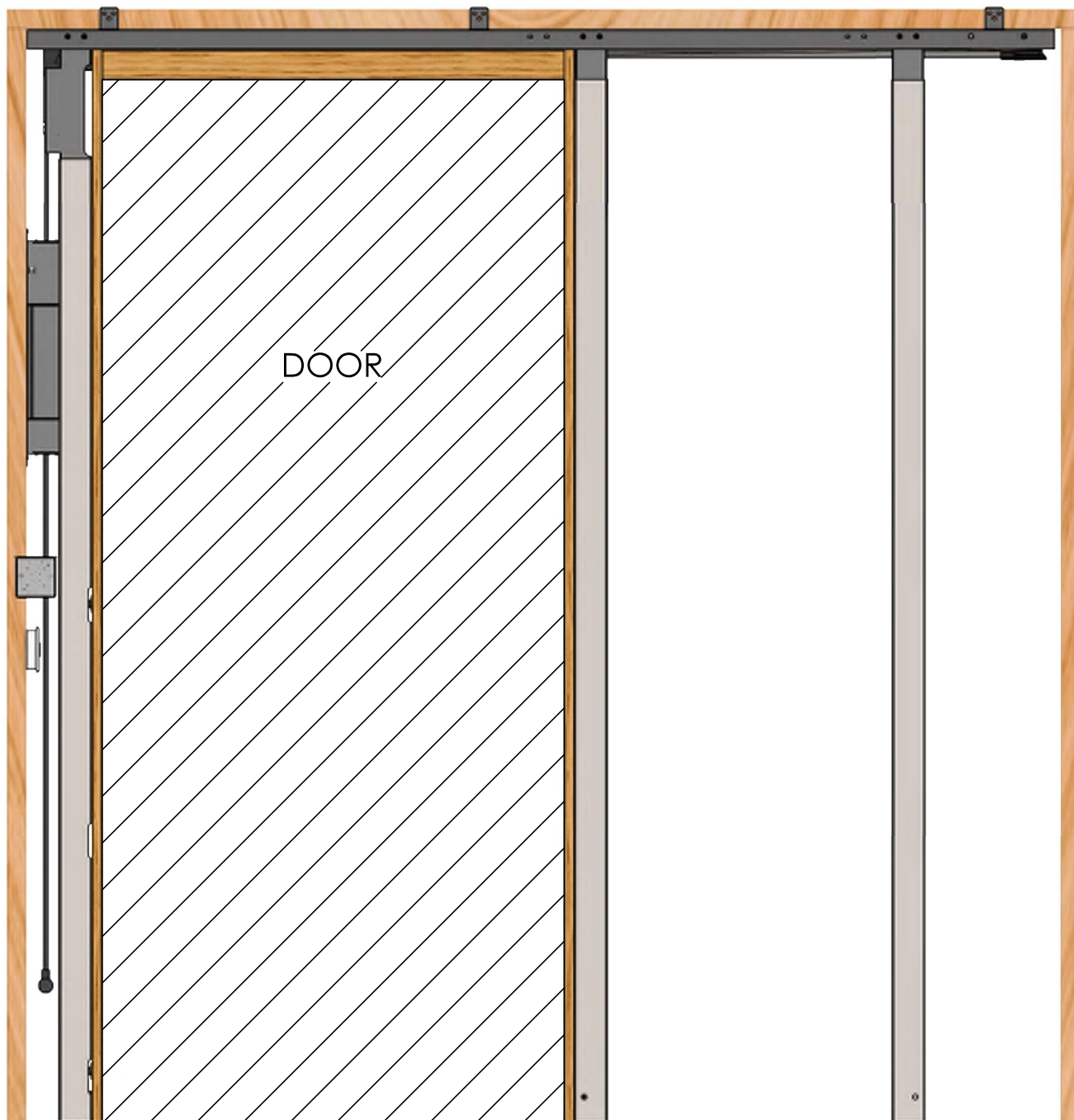
## WAAY Smart Door System

Installation Steps for 36" Wide x 80" Tall x 1-3/8" Thick Slab Door  
(Max Weight 65 Lbs)



Install Video

**Tools Needed:** Tape Measure, Level, Phillips Screw driver, Concrete drill bit if not using epoxy, Drill, Gloves



# Identify All Components



①  
**Channel Assembly**  
FRM-CHAN-0073  
Qty: 1



②  
**Power Supply**  
ASM-PSUP-0059  
Qty: 1



③  
**Metal Pocket Side Stud A with Wood Trim**  
FRM-STUD-0034  
Qty: 1



④  
**Metal Pocket Side Stud B with Wood Trim**  
FRM-STUD-0034  
Qty: 1



⑧  
**Metal Pocket Side Studs**  
FRM-STUD-0034  
Qty: 2



⑨  
**Metal Motor Side Studs**  
FRM-STUD-0033  
Qty: 2



⑩  
**Wood Valance Top Trim**  
TRM-VALE-0035  
Qty: 2



⑬  
**Wood Jamb**  
TRM-JAMB-0018  
Qty: 1



⑤  
**Pocket Side Stud bracket**  
FRM-BRKB-0022  
Qty: 4



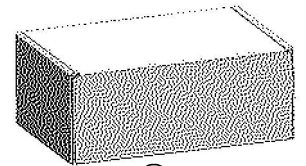
⑥  
**Motor Side Stud bracket**  
FRM-BRKA-0021  
Qty: 2



⑦  
**Bottom Stud bracket**  
FRM-FBRK-0023  
Qty: 3



⑪  
**Valance Bracket**  
FRM-VBRK-0039  
Qty: 4



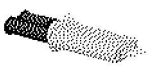
⑫  
**WAAY Motor Box**  
BOX-SMAL-0146  
Qty: 1  
(Separate component list inside)



⑭  
**Jamb Bracket**  
FRM-JBRK-0031  
Qty: 3

\*Wood Trim Color May Vary

# Hardware Identification



⑮  
**Floor Bracket Epoxy**  
ACC-EPOX-0232  
Qty: 1



⑯  
**Trim Screw**  
FST-SCRW-0071  
Qty: 30



⑰  
**'C' Channel Mounting Screw**  
FST-FHSC-0147  
Qty: 6



⑱  
**Jamb/Valance Bracket Screw**  
FST-8X12-0227  
Qty: 20



⑲  
**Self Tapping Drywall Screw**  
FST-SCRW-0148  
Qty: 50



⑳  
**Concrete/Wood Floor Screw**  
FST-CONC-0230  
Qty: 12



㉑  
**Pocket/Motor Stud Bracket Screw**  
FST-M5X8-0044  
Qty: 12



㉒  
**Power Supply Screw**  
FST-8x34-0228  
Qty: 2



㉓  
**Plastic Tool Holder**  
ACC-BRAC-0154  
Qty: 1



㉔  
**WAAY Door Lift**  
ACC-LIFT-0149  
Qty: 1



㉕  
**5/16 Allen Wrench**  
ACC-ALWR-0150  
Qty: 1



㉖  
**3mm Allen Wrench**  
ACC-ALWR-0151  
Qty: 1



㉗  
**4mm Allen Wrench**  
ACC-ALWR-0231  
Qty: 1

# Motor Box Components



**1A**  
**36V Motor**  
 MTR-BLDC-0080  
 Qty: 1



**2A**  
**Coiled Cable**  
 CBL-RJ12-0107  
 Qty: 4



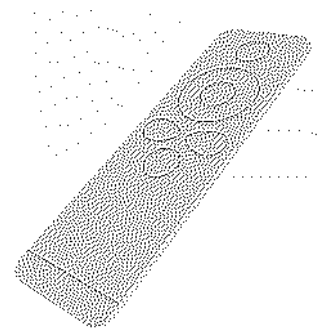
**3A**  
**Jamb Sensor**  
 ASM-JNSN-0222  
 Qty: 2



**4A**  
**Outer Panel**  
 ASM-SPNL-0099  
 Qty: 1



**5A**  
**Inner Panel (Red Dot)**  
 ASM-MPNL-0100  
 Qty: 1



**6A**  
**WAAY Remote**  
 ACC-REMT-0083  
 Qty: 2

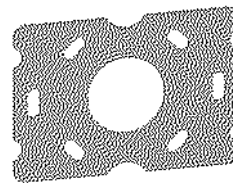
# Hardware Identification



**7A**  
**3V CR2025 BATTERY**  
 TUX-RBAT-0084  
 Qty: 2



**8A**  
**Jamb Sensor Screw**  
 FST-8X12-0227  
 Qty: 4



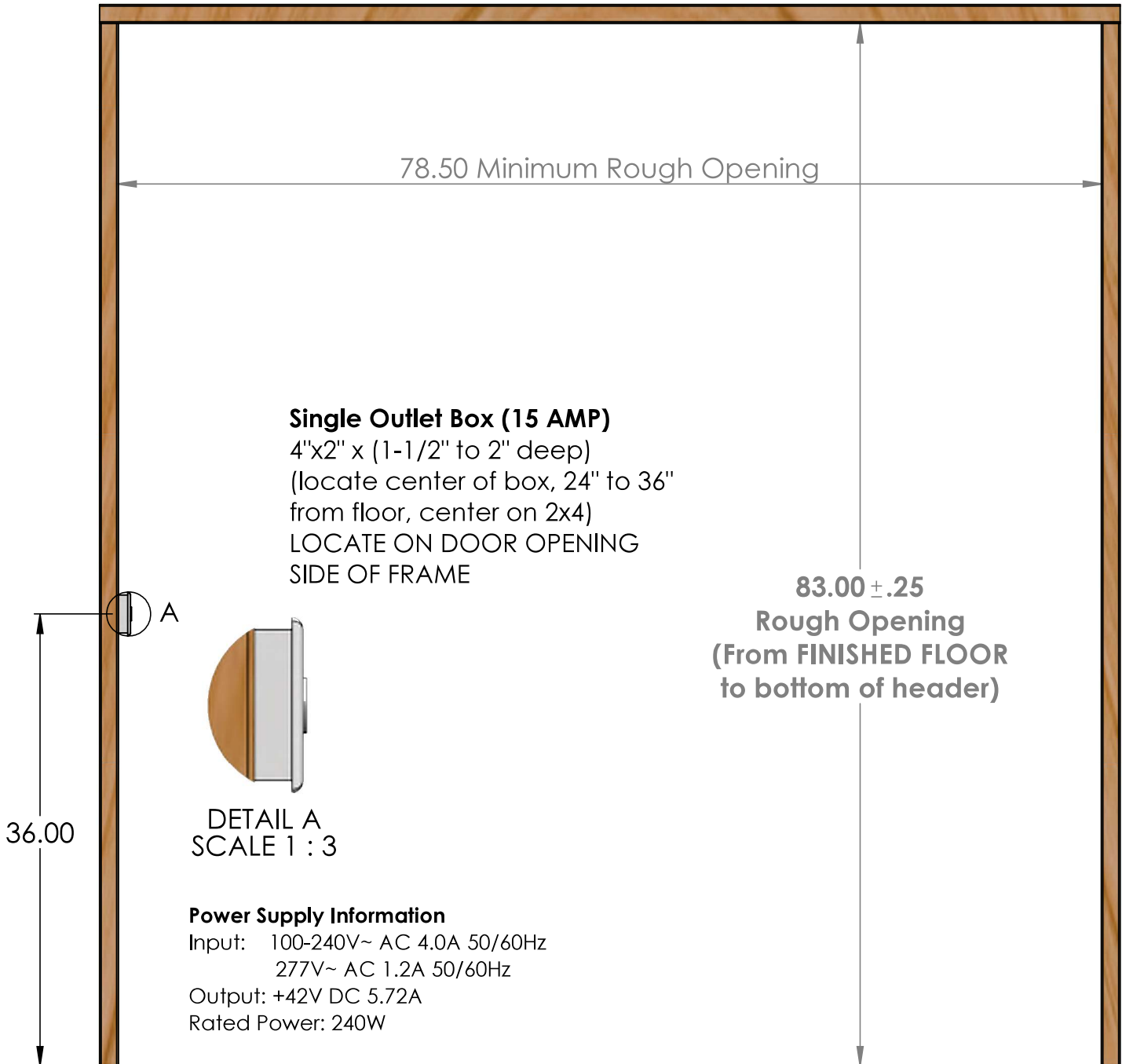
**9A**  
**Panel Mounting Plate**  
 MEC-PANL-0101  
 Qty: 2



**10A**  
**Mounting Plate Screw  
 with Nylon Anchor**  
 FST-ANCR-0229  
 Qty: 4

# Rough-Out 2x4 Framing and Electric

\*top of header structure not shown

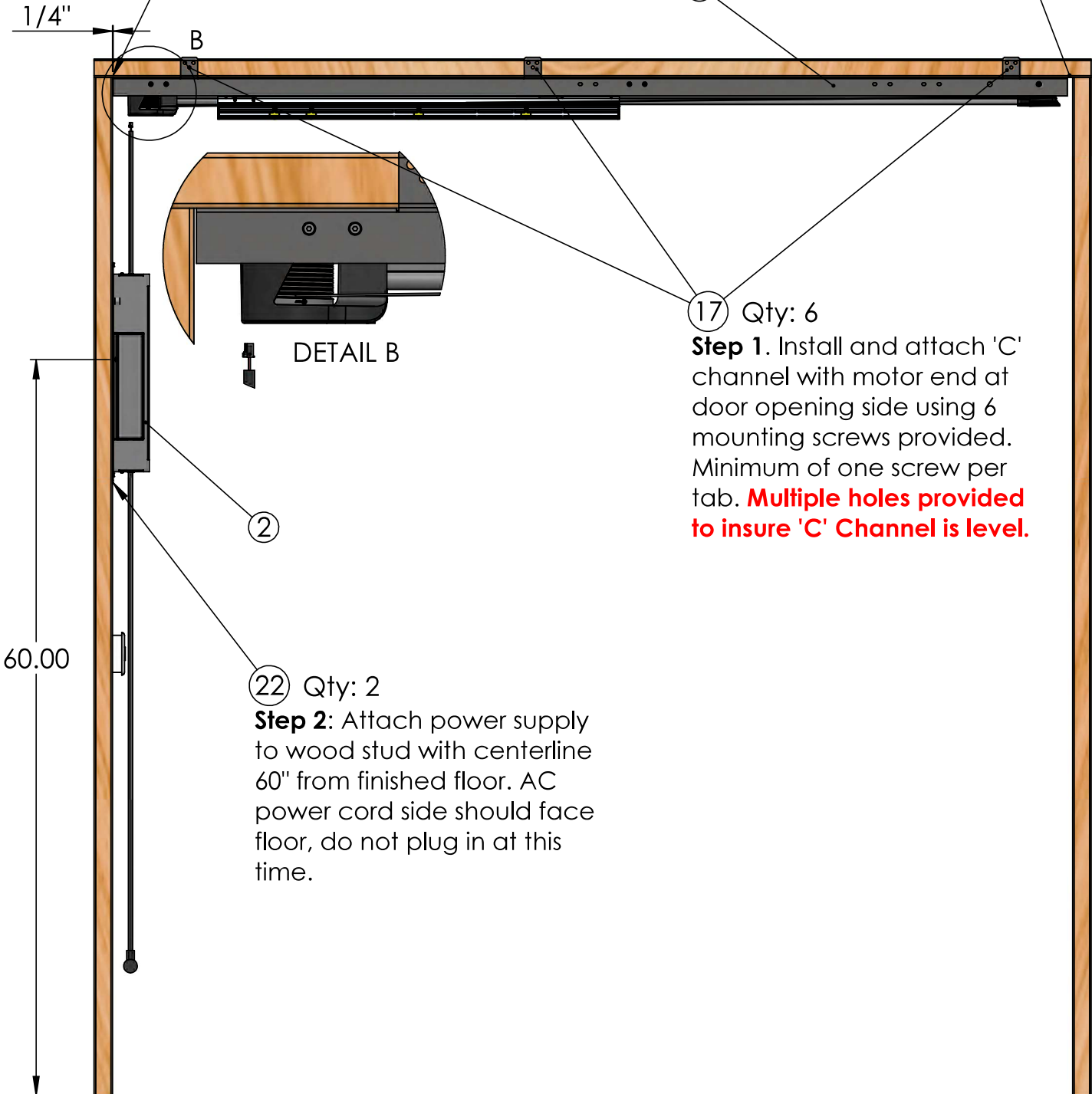


# 'C' Channel and Power Supply

\*If needed flare "C" Channel tabs out to mount to header

**Step 1A. Maintain 1/4" Gap between end of c channel and wood stud, motor end.**

Gap on this side may vary



①

①7 Qty: 6

**Step 1.** Install and attach 'C' channel with motor end at door opening side using 6 mounting screws provided. Minimum of one screw per tab. **Multiple holes provided to insure 'C' Channel is level.**

②

②2 Qty: 2

**Step 2:** Attach power supply to wood stud with centerline 60" from finished floor. AC power cord side should face floor, do not plug in at this time.

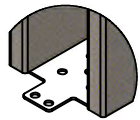
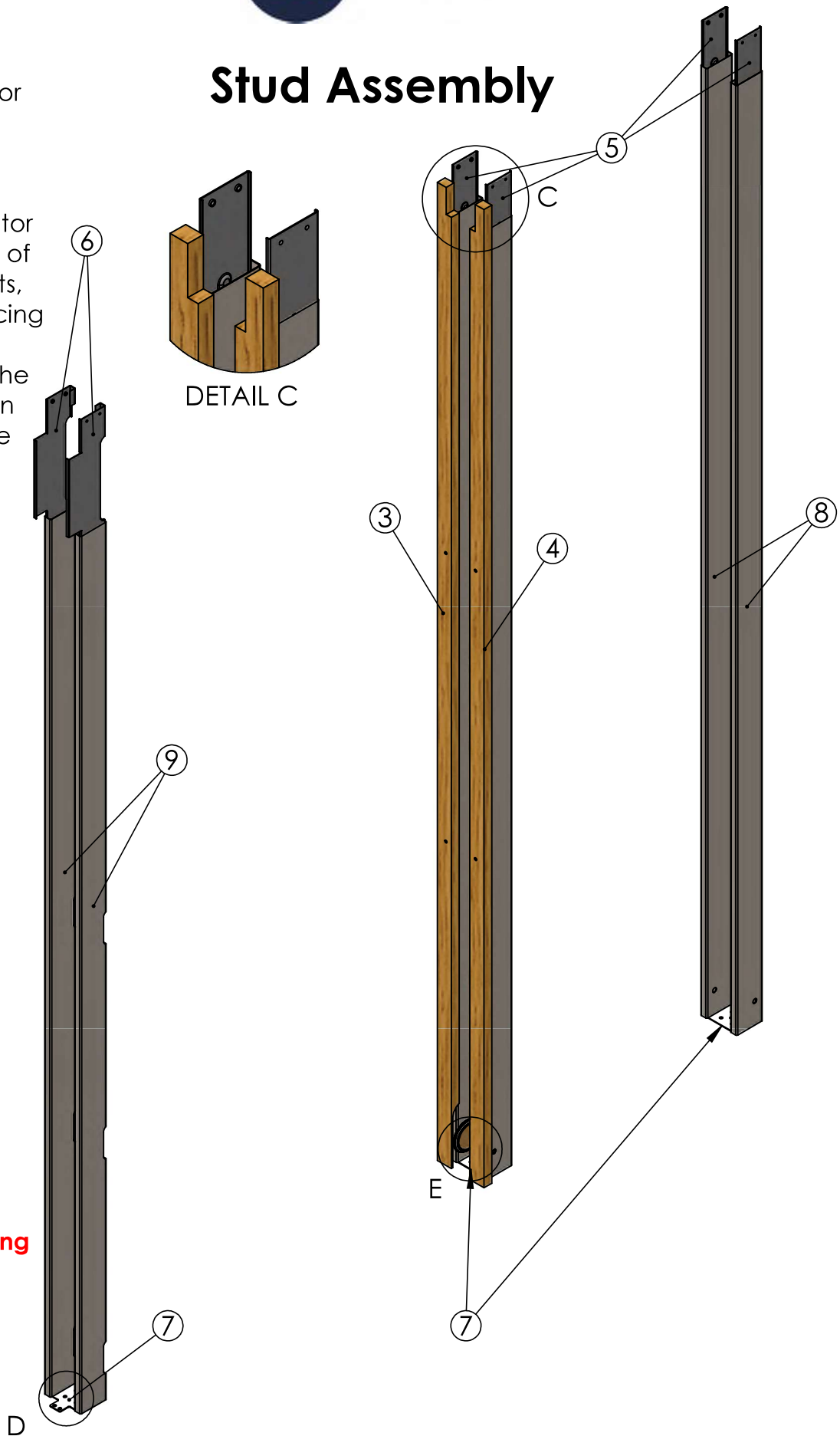
60.00

# Stud Assembly

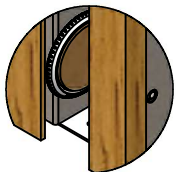
**Step 1:** Place floor brackets in approximate location.

**Step 2:** Insert Motor Side stud on top of the floor brackets, with the tabs facing away from door opening. Insert the Motor brackets in top of motor side stud

**Step 3:** Repeat same steps with the pocket side studs and pocket side brackets.



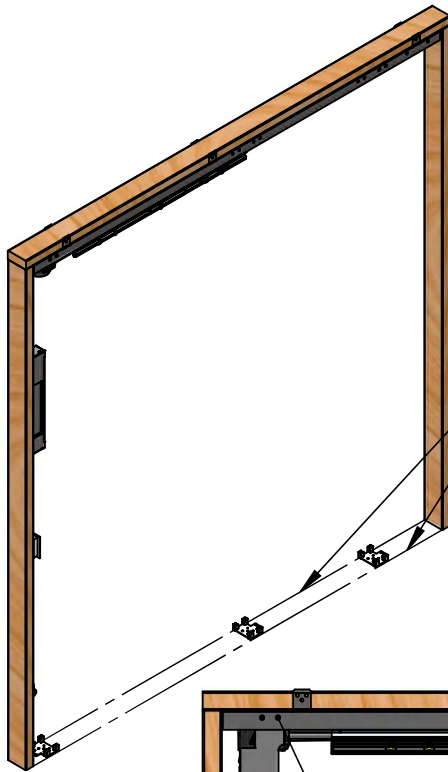
DETAIL D



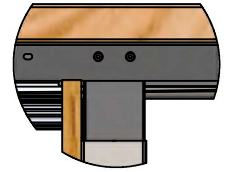
DETAIL E

**The bottom stud bracket tab must face away from door opening on each side**

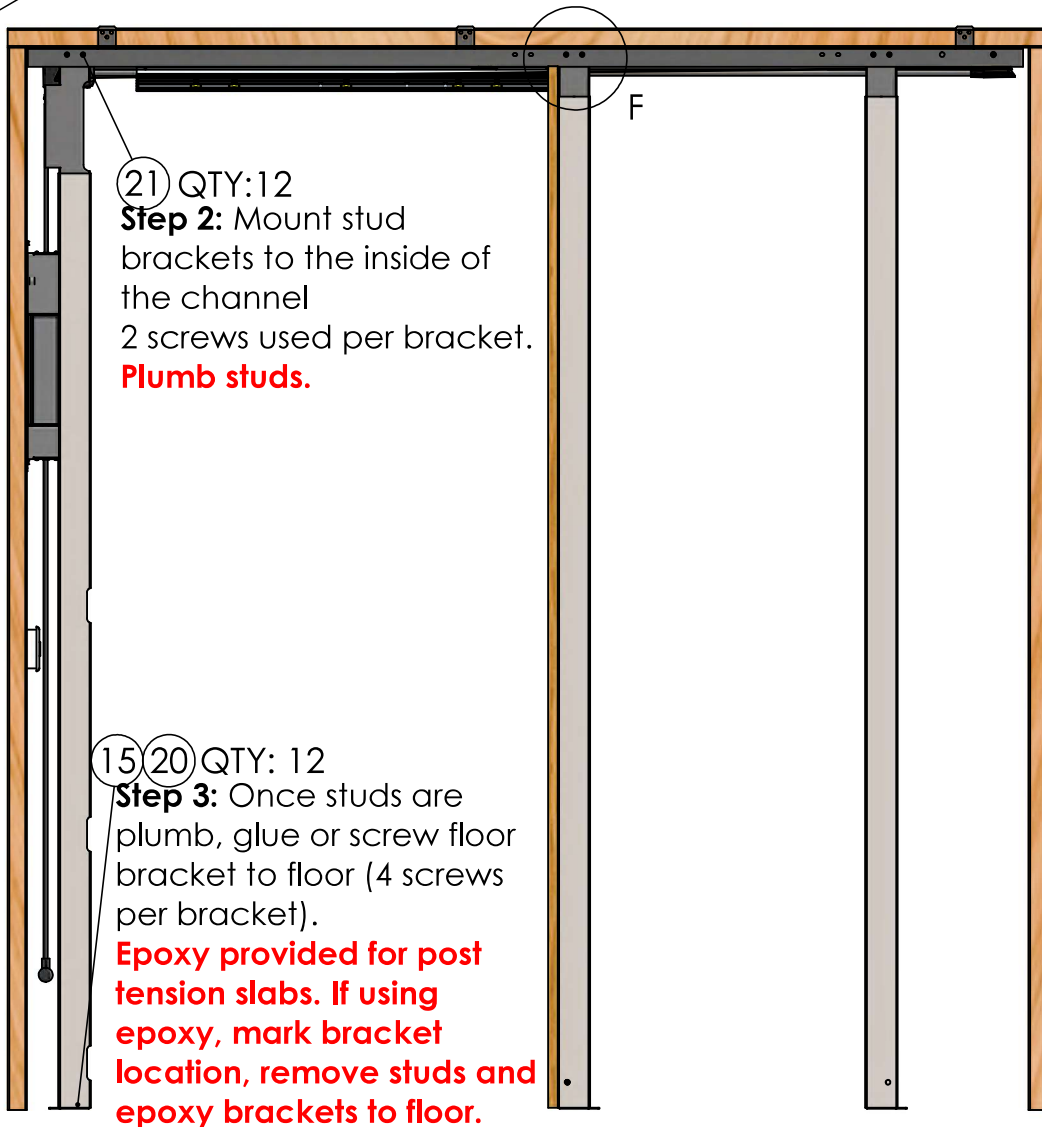
## Stud Installation



**Step 1:** Draw, or snap a chalk line on the inside and outside of existing 2x4 bottom plates to square the floor brackets (floor brackets shown for reference)



DETAIL F

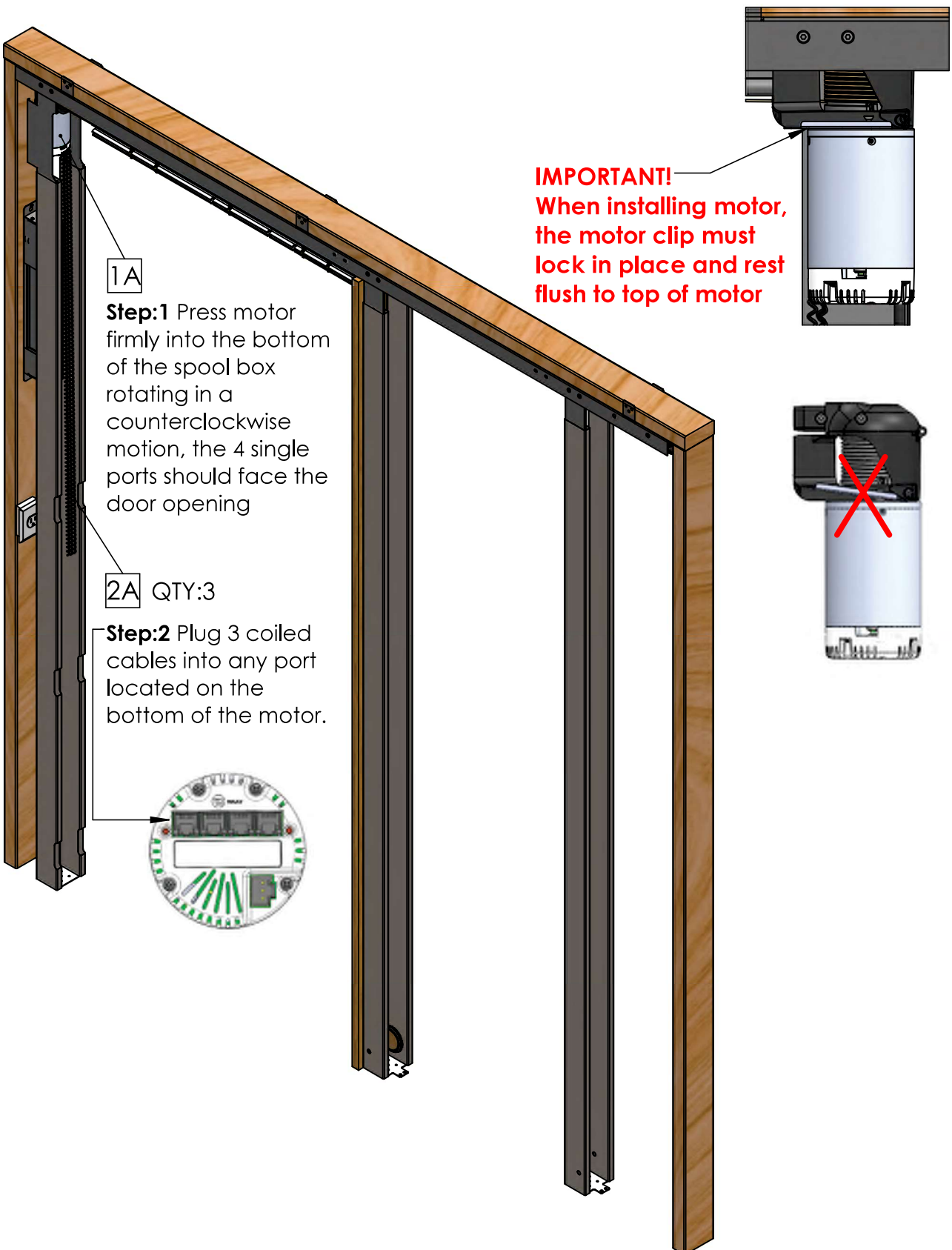


21 QTY: 12  
**Step 2:** Mount stud brackets to the inside of the channel  
2 screws used per bracket.  
**Plumb studs.**

15 (20) QTY: 12  
**Step 3:** Once studs are plumb, glue or screw floor bracket to floor (4 screws per bracket).  
**Epoxy provided for post tension slabs. If using epoxy, mark bracket location, remove studs and epoxy brackets to floor.**

**\*The bottom stud bracket tab must face away from door opening on each side**

# Motor Installation



# Drywall Installation



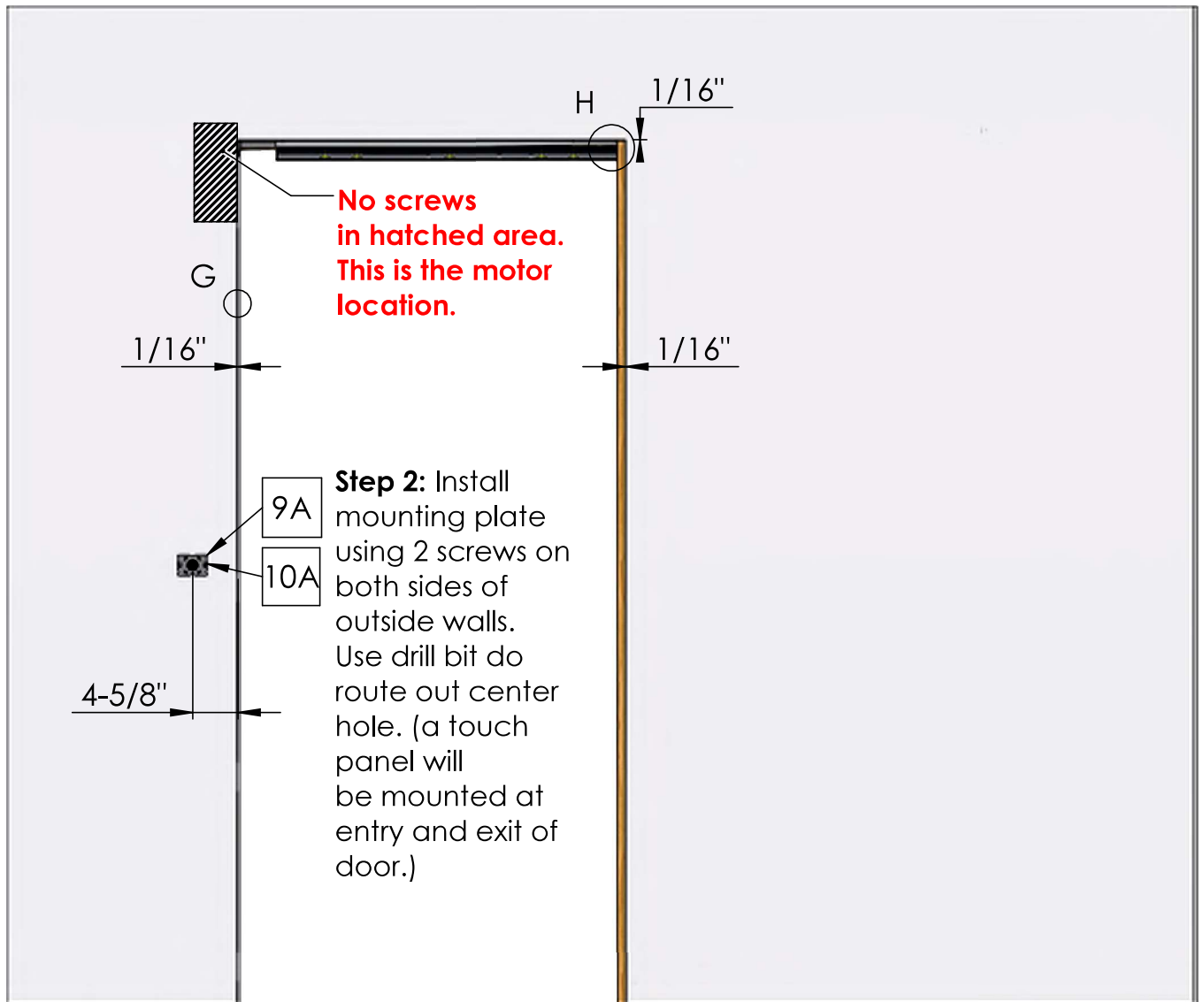
DETAIL G

**Step 1:** Mount drywall leaving a 1/16" reveal from the face of metal studs.



DETAIL H

**Step 1A:** Mount drywall leaving 1/16" reveal from bottom of 'C' Channel.

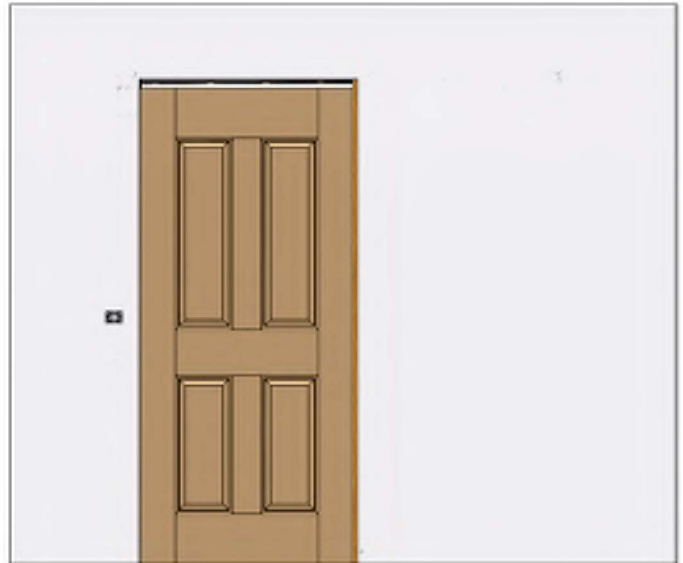


# Door Installation

\*Verify that door is not bowed prior to installation.

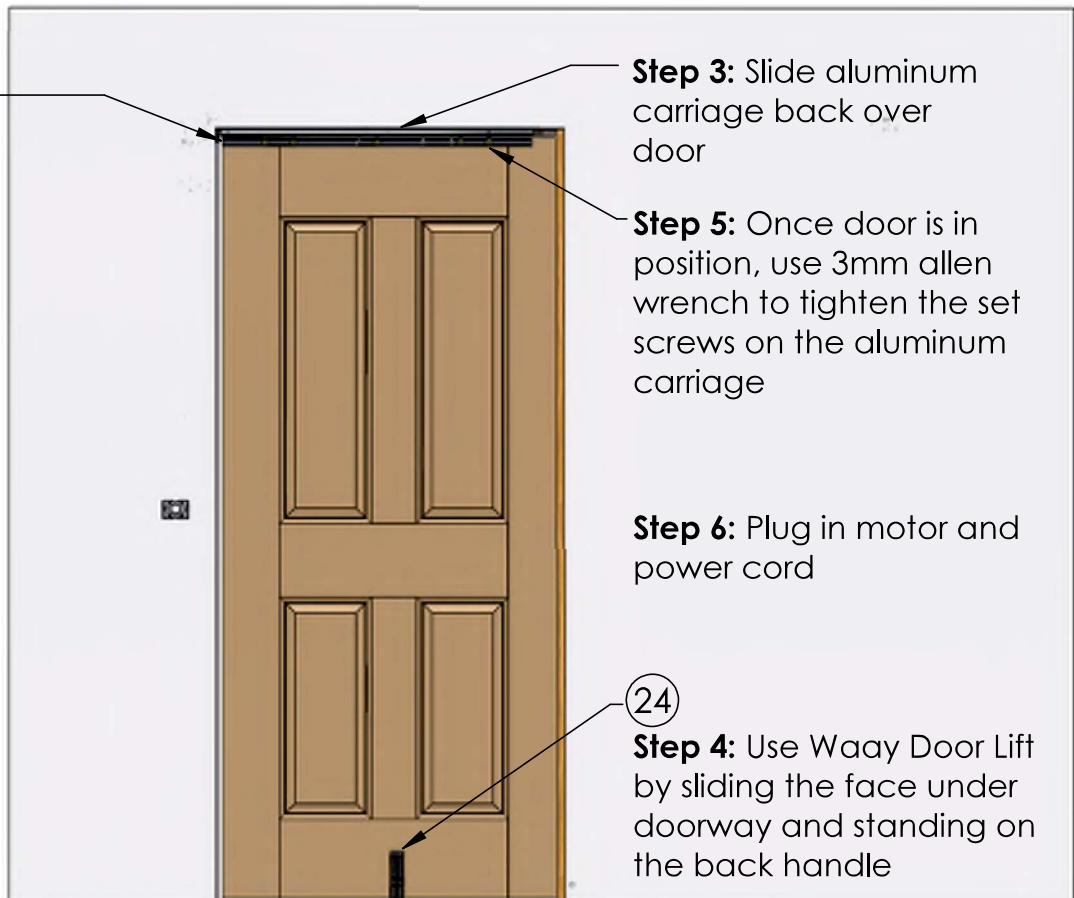


**Step 1:** Slide aluminum carriage along "c" channel into wall cavity and slide door into opening at an angle



**Step 2:** Align the door to mounted wood trim and loosen carriage bolts if needed.

Door reveal should protrude past aluminum carriage by 1/16"



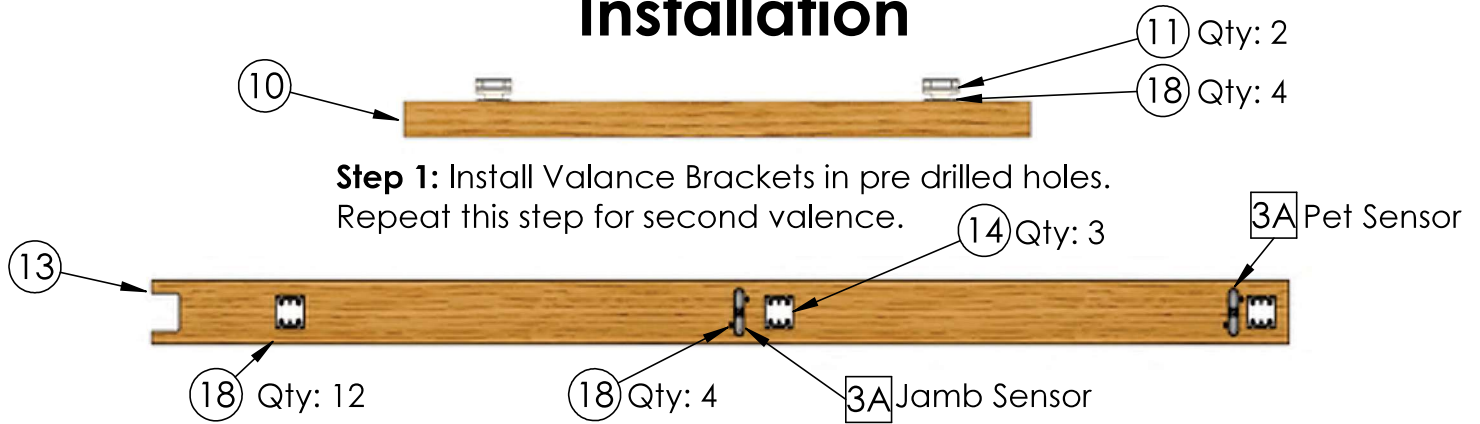
**Step 3:** Slide aluminum carriage back over door

**Step 5:** Once door is in position, use 3mm allen wrench to tighten the set screws on the aluminum carriage

**Step 6:** Plug in motor and power cord

**24**  
**Step 4:** Use Waay Door Lift by sliding the face under doorway and standing on the back handle

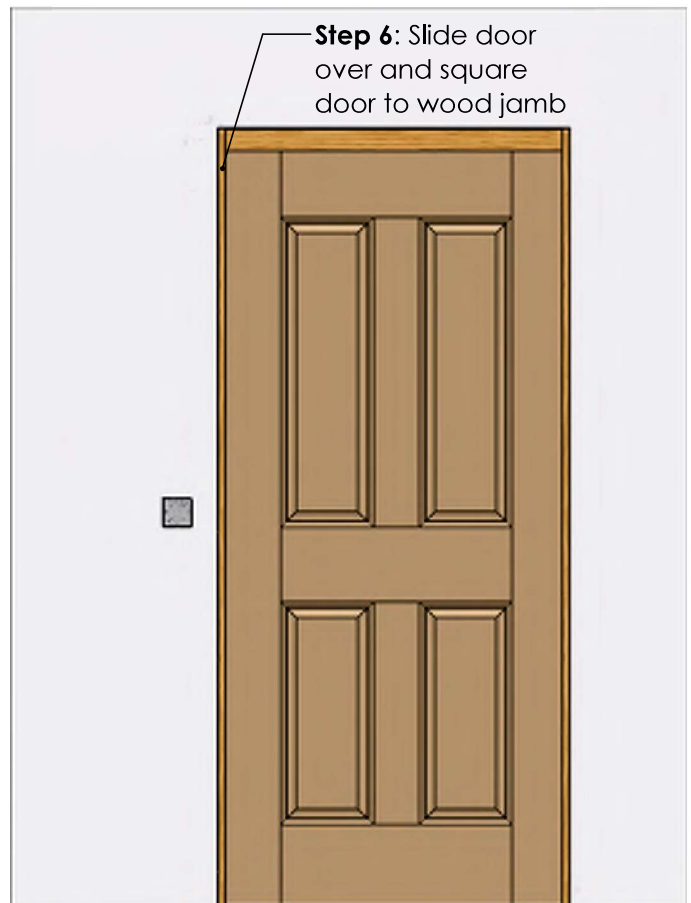
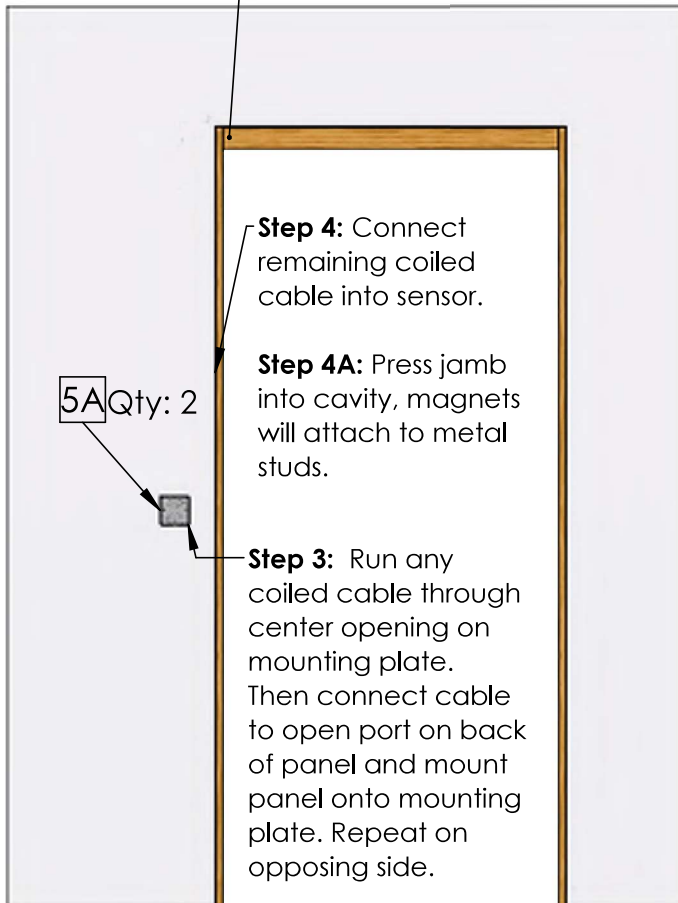
# Wood Jamb, Valance, and Panel Installation



**Step 1:** Install Valance Brackets in pre drilled holes. Repeat this step for second valance.

**Step 2:** Install Jamb brackets and sensors in pre drilled holes and connect one coiled cable from either port on jamb sensor to either port on pet sensor

**Step 5:** Slide door into wall and install front and back valance, the magnets will attach to inside of channel.  
**Make sure valance bracket is not caught on pulley system.**



**\*Mount panel with red dot inside room.**